

*A meeting like no other*

ONLY AT

**GOODWOOD**

# THE GOODWOOD ESTATE

---

Set in 11,000 acres of beautiful West Sussex countryside, an hour from London and just a short drive from the sea, Goodwood is a quintessential sporting estate. From the Georgian splendour of Goodwood House, the roaring speed of the Motor Circuit, the elegance of The Kennels Clubhouse and the luxury and comfort found in our hotel, cottages and Hound Lodge, your event at Goodwood will be crafted with care and meticulous attention to detail.

Corporate events are constantly evolving and Goodwood's stunning natural surroundings, combined with the expertise across the estate and adaptable event spaces, create an ideal setting for a more thoughtful approach to gatherings. Whatever your needs, we offer a variety of spaces, catering options, wellbeing experiences and inspiring activities for every occasion – from team-building and brainstorming sessions to celebrations and product launches, Goodwood is the ultimate corporate retreat.

Our experienced event planners and chefs work directly with you or your agent to craft a truly unique and unforgettable experience.







# INDEX

---

## WHY GOODWOOD

### EVENT SPACES

Goodwood House	The Aerodrome
Goodwood Racecourse	The Great Outdoors
The Kennels	Clay Shoot Lodge
The Goodwood Hotel	Goodwood Art Foundation
The Motor Circuit	

### ESTATE EXPERIENCES

Cars	Shooting
Planes	Tree Climbing
Golf	Farm

### FOOD

### STAY THE NIGHT

Hound Lodge
Goodwood Cottages
The Goodwood Hotel

### SUSTAINABILITY







# WHY GOODWOOD

---

## A BESPOKE SERVICE

A dedicated event manager will create a unique experience for you and your guests from the moment you enquire.

## EASY TRANSPORT

Just over an hour from London by train or car and from Gatwick and Heathrow, you can also make use of our Aerodrome should you wish to fly into your event.













## BEAUTIFUL, ADAPTABLE AND VERSATILE SPACES

At Goodwood you have 11,000 acres to play with. Each part of the estate has its own identity; from trackside meeting spaces at the Motor Circuit, huge hangars for larger events at the Aerodrome, the grandiose wonder of Goodwood House, intimate meeting rooms and al fresco dining at The Kennels and The Goodwood Hotel, larger conference spaces and rooftop event spaces at The Racecourse and endless ancient woodland and rolling hills for outdoor events, this is your playground.

## EXCEPTIONAL EXPERIENCES

Only at Goodwood can you take your team out of the office and hurtle around the Motor Circuit by car or simulator, take to the skies in Spitfires, plunge into ice baths using the Wim Hof method, take aim and fire at our clay shoot and off-road in our vintage Land Rovers.

## WORLD-CLASS FOOD AND DRINK

With food sourced from our organic farm, we are passionate about serving the very best food and drink. With in-house chefs and catering teams, we will deliver exceptional, seasonal dishes that suit you and your guests tastes.



















# EVENT SPACES

---

## YOUR BESPOKE EVENT

Whether you're looking to host a private dinner party at Hound Lodge, a lavish ball at Goodwood House or take your team to the skies, the track or off-road, we can build the perfect event for you.

Whilst our buildings are historic and beautiful, modern essentials haven't been overlooked, from AV tech to electric charging points, everything has been discreetly included.





# INSIDE GOODWOOD HOUSE

---

Home to the Duke and Duchess of Richmond for over 300 years, Goodwood House is an example of Georgian splendour, with one of the finest private art collections in the country.

With centuries of experience hosting lavish balls, entertaining is central to the fabric of the estate. The house is available for exclusive use parties and seminars, or for private meetings in the Egyptian Dining Room or Music Room and creates a sense of gravitas and wonder.

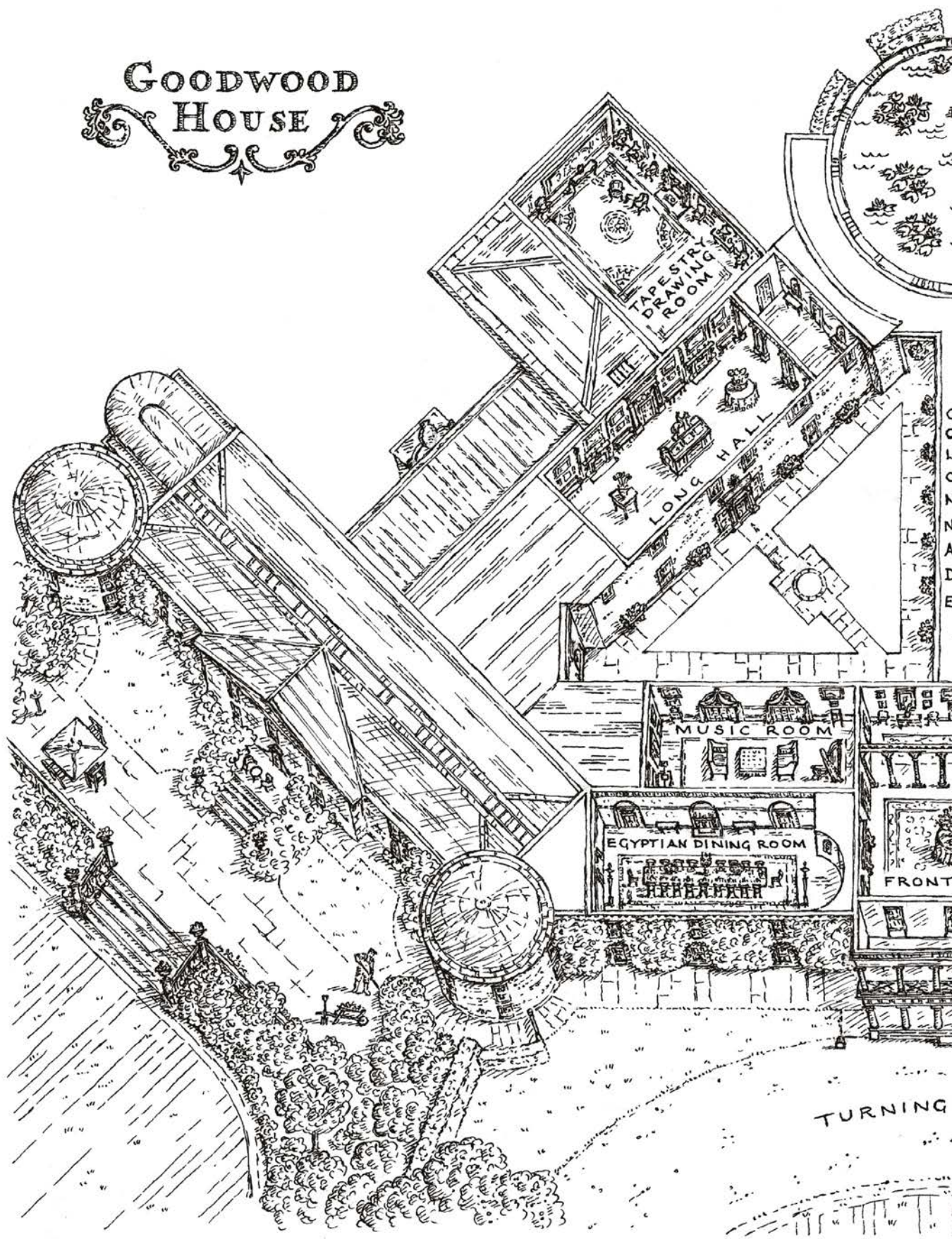




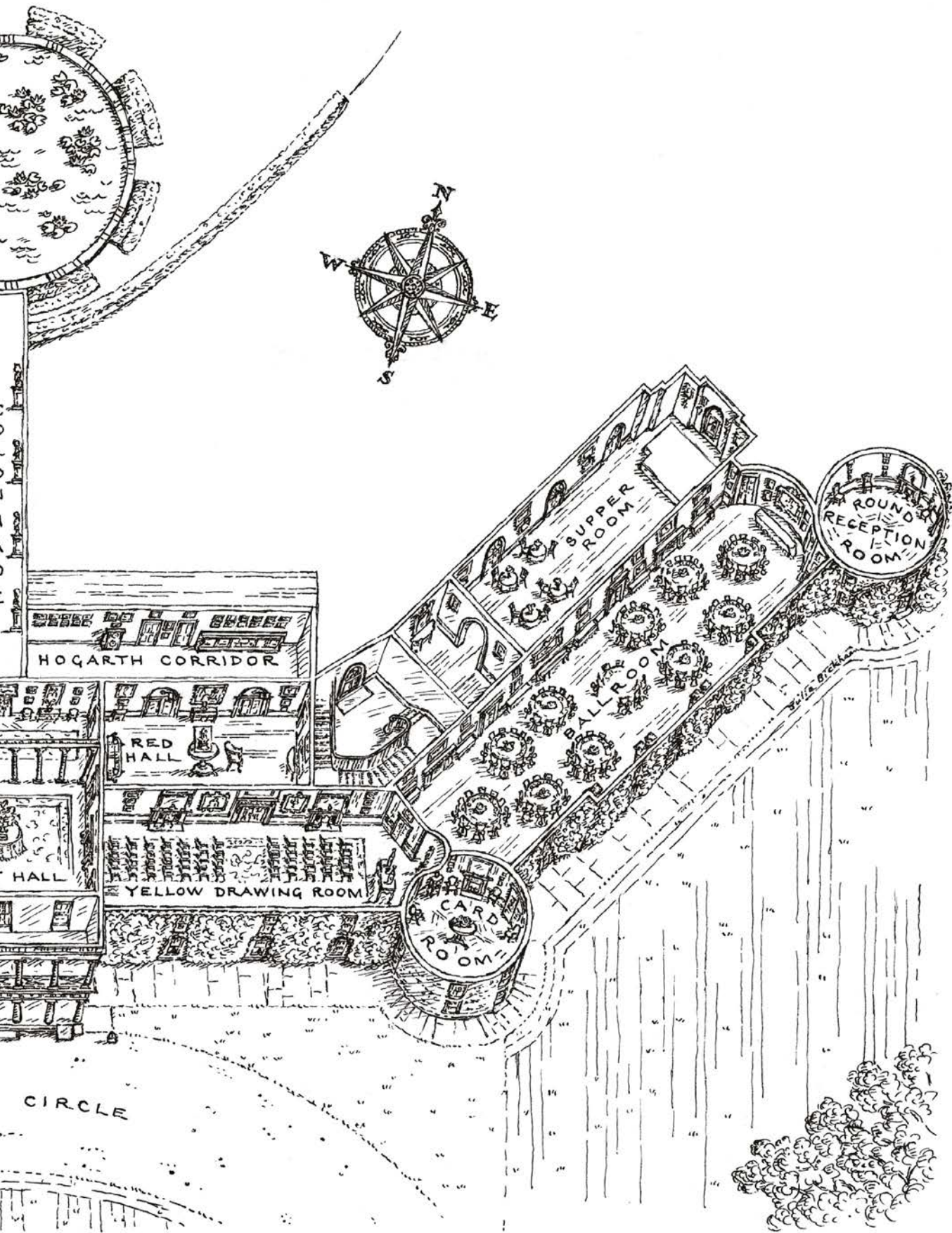




# GOODWOOD HOUSE

















THE BALLROOM





THE EGYPTIAN  
DINING ROOM







THE FRONT HALL







THE BALLROOM









# THE RACECOURSE

---

Goodwood Racecourse is renowned for being the most beautiful racecourse in the world. Outside of the racing season, it offers a host of beautiful spaces with breathtaking views of the South Downs. From roof terraces, sweeping lawns and adaptable indoor spaces, there are endless possibilities to host an exceptional event.









# CHARLTON HUNT

---

The Charlton Hunt is a beautiful space for private dining experiences, with elegant interiors and banquette tables. It is ideal for executive lunches, private dinners and high-end hospitality events.















# THE LONG VIEW

---

The Long View offers a highly adaptable setting, suitable for a range of events, including conferences, formal and casual dining. The panoramic views of the racecourse provide a stunning backdrop for guests, whilst the flexible layout allows for a seamless transition between different event styles.

A centrally positioned bar serves as a natural divider within the space, providing breakout areas and can also be used for buffet lunches and receptions.













# THE HORSEWALK

---

The Horswalk's layout is ideal for theatre-style conferences, with space to accommodate a stage at the front and a perimeter space perfect for breakout areas and exhibition setups.

It can also transition seamlessly into a perfect space for parties, with the built-in bar providing a central focal point and an incredible roof terrace above for guests to take in the spectacular views and dance the night away.













# DOUBLE TRIGGER

---

The Double Trigger offers an intimate setting ideally suited for private dining. Opening out onto the Champagne Bar Lawn, it provides a perfect space for guests to move into following an outdoor reception.

It can also be used for corporate events, including boardroom meetings and smaller conferences.









WELCOME TO THE EVENT  
DAY 1  
Thursday 1st August  
FIRST RACE 1.30  
LAST RACE 5.30







# THE CHARLTON HUNT ROOF

---

The Charlton Hunt Roof is a beautiful al fresco space with sweeping views as far as the eye can see across the South Downs. With a permanent canopy, it provides a sophisticated atmosphere. Enjoy drinks and canapes before moving downstairs to Double Trigger for a private dinner.

The Charlton Hunt Roof provides a beautiful garden space, perfect for outdoor parties, with the flexibility to include a marquee.











1989

1989





QATAR GOODWOOD

1989

THE HORSEWALL

# THE KENNELS

---

Built in 1787 and once home to the hounds, The Kennels is now a beautiful private members club on the estate, providing a warm and inviting space for people to relax by the fire with the papers, meet with friends and enjoy exceptional food sourced from Goodwood Home Farm.

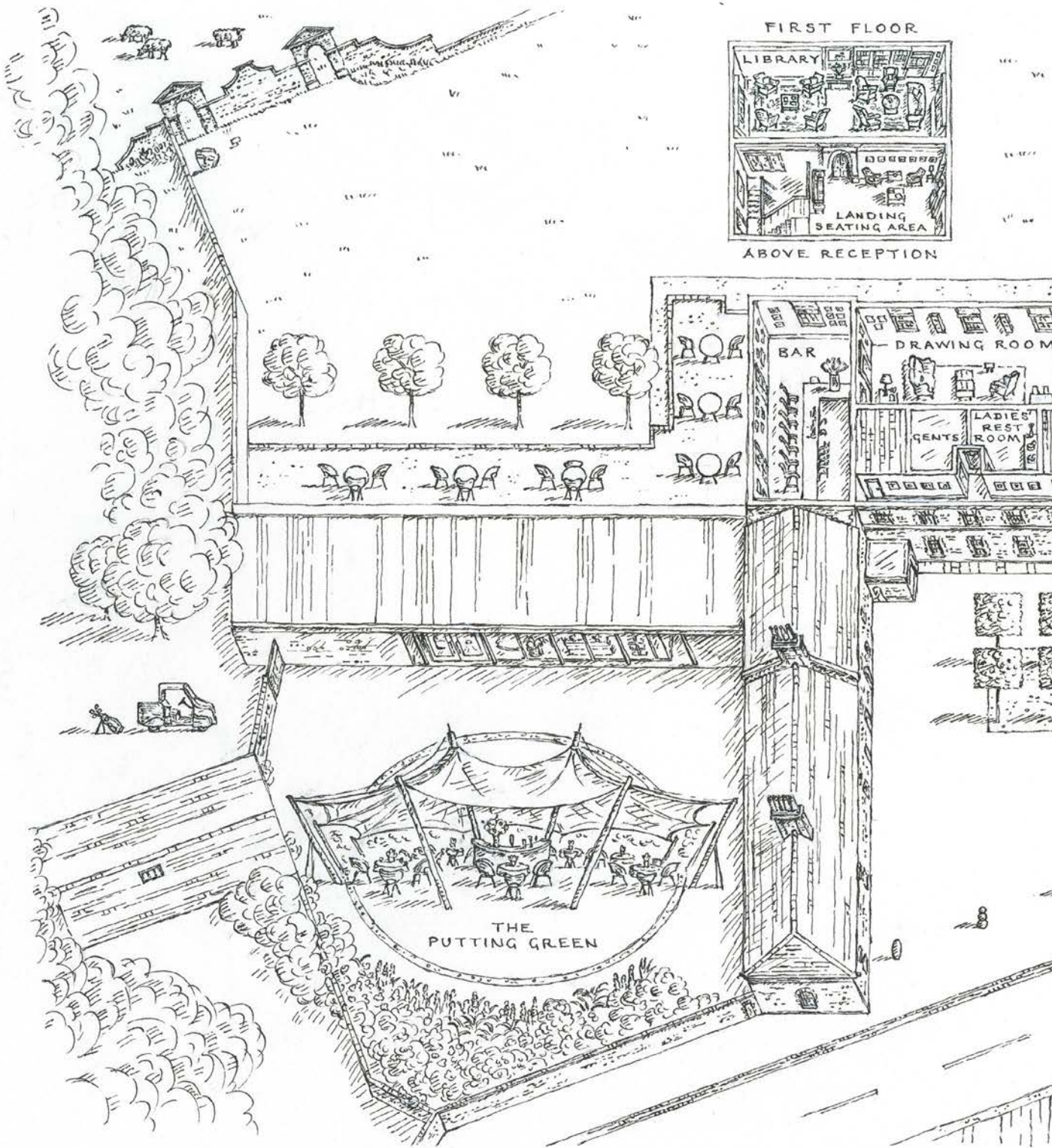
With interiors designed by Cindy Leveson, it is a versatile space, suitable for more intimate meetings and receptions. The Putting Green comes to life in the warmer months and is perfect for hosting al fresco events.



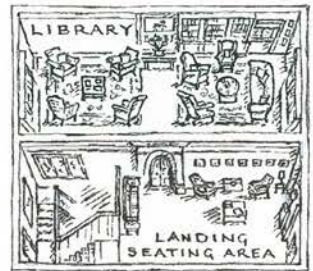




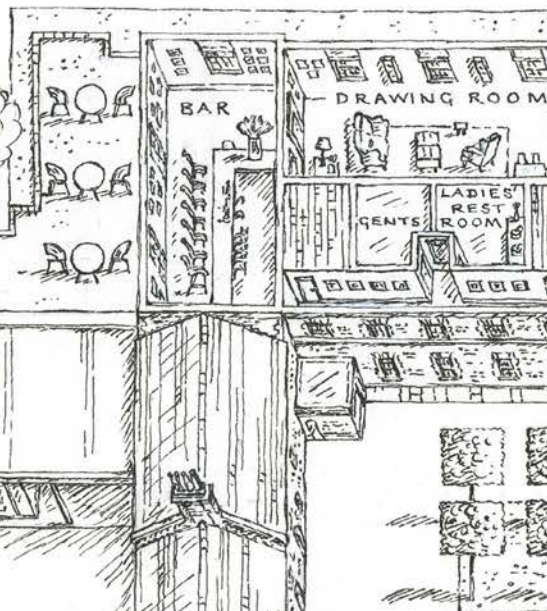




FIRST FLOOR

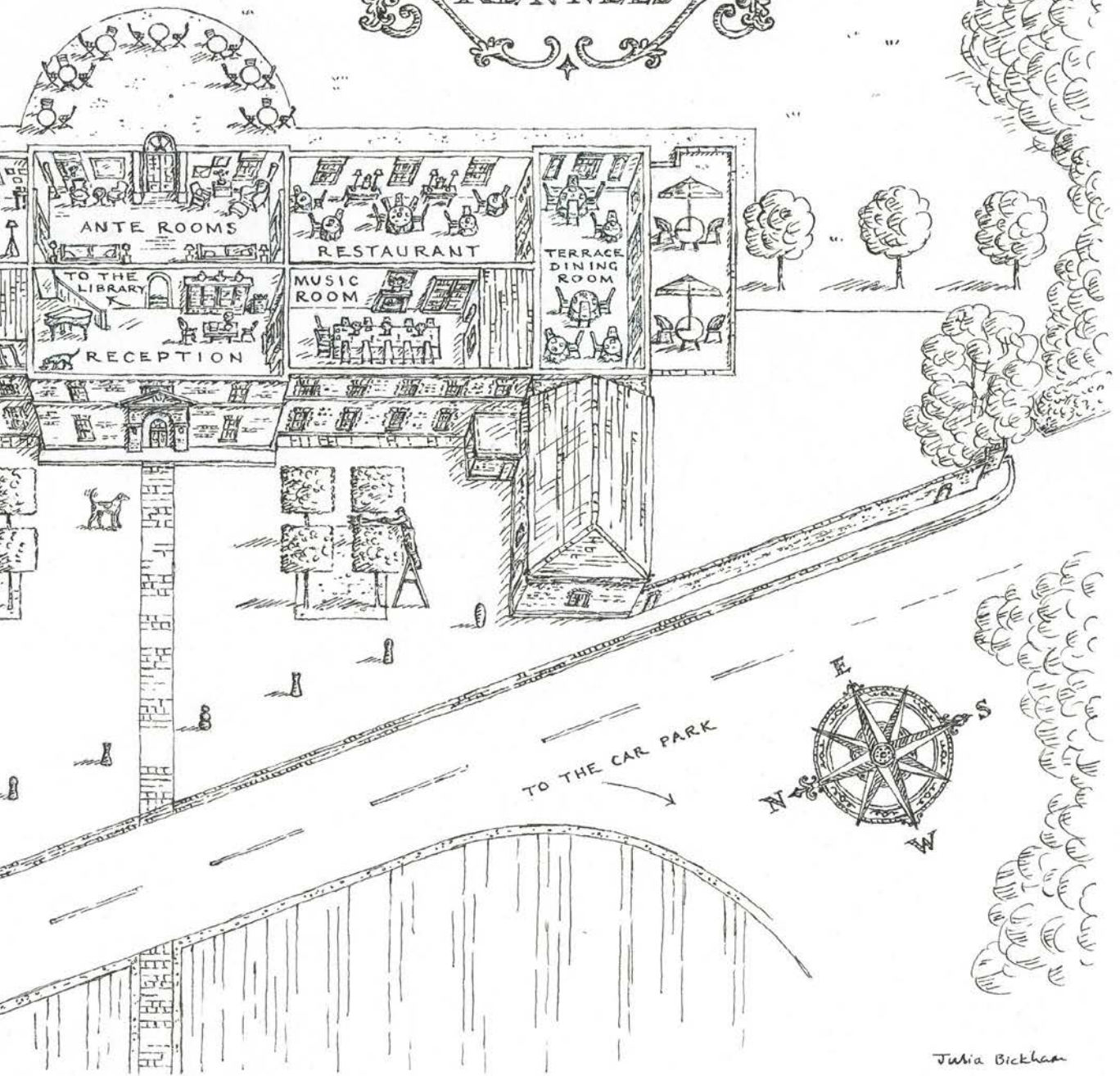


ABOVE RECEPTION





# THE KENNELS





DRAWING ROOM







DINING ROOM





















# THE GOODWOOD HOTEL

---

The Goodwood Hotel is a former eighteenth-century coaching inn, located near the entrance to the park and the ideal base from which to explore the Estate. The hotel has 91 stunning bedrooms and suites and guests can make use of the adjoining health club and spa facilities.

Whether you are looking for somewhere to hold training workshops, focus sessions, board meetings, or product launches, the hotel offers a huge range of possibilities. Our chefs take inspiration from Goodwood Home Farm to produce innovative menus and guests can dine at our sustainable restaurant, Farmer, Butcher, Chef, which showcases the very best estate-reared meat.

With a host of beautiful spaces for hosting meetings and conferences, all with high-spec equipment, The Goodwood Hotel offers versatility and adaptability, tailored to your needs.



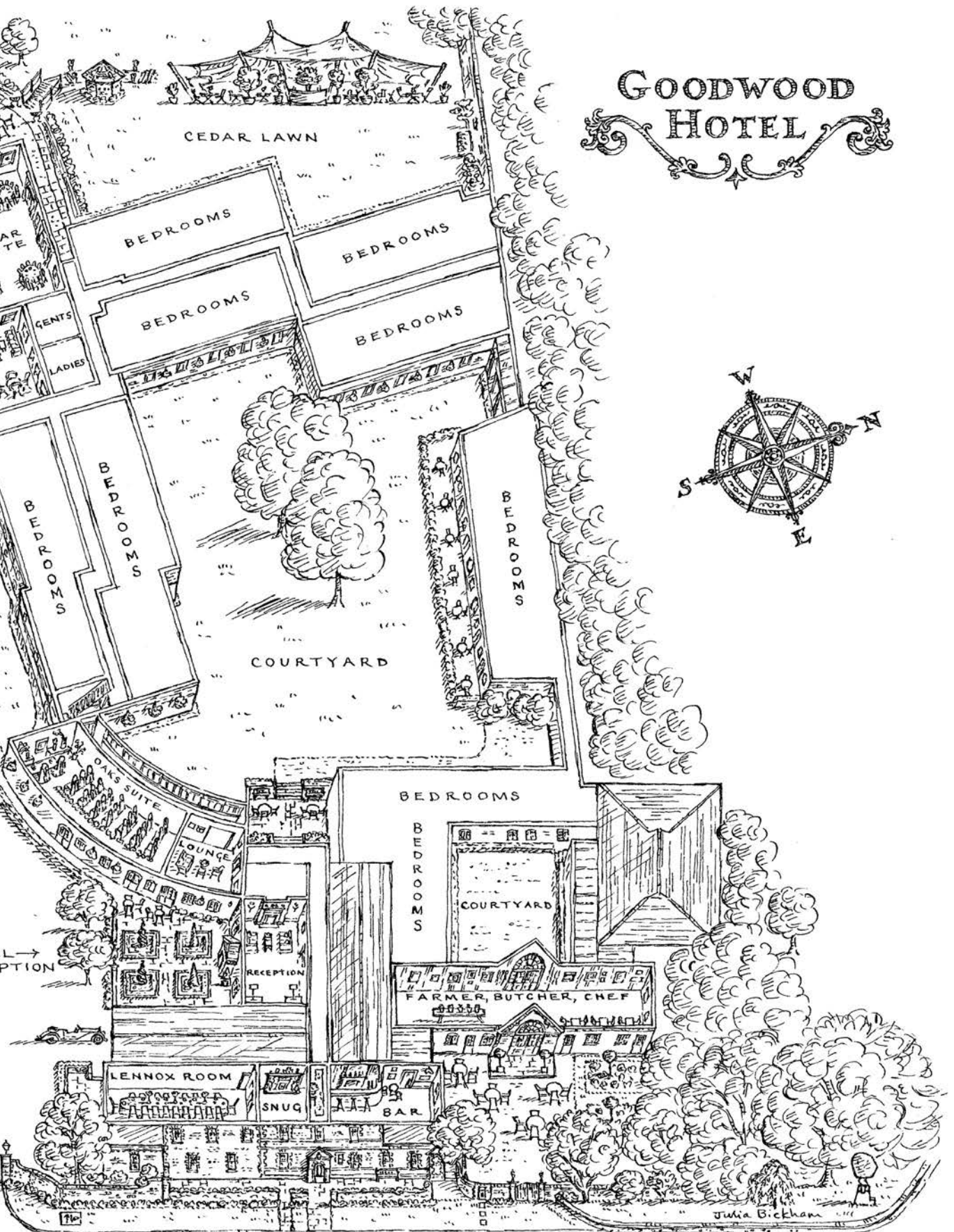








# GOODWOOD HOTEL







FARMER, BUTCHER, CHEF COURTYARD









LENNOX SUITE







LENNOX SUITE















THE OAKS SUITE













# GOODWOOD MOTOR CIRCUIT

---

Goodwood Motor Circuit opened its gates to the public in 1948 to host Britain's first post-war motor racing meeting. Since that time, the Circuit has hosted some of the most inspiring names in motor racing history – from Sir Stirling Moss and Bruce McLaren, to Sir Jackie Stewart and Juan Fangio. Each year it plays host to Goodwood Revival, the world's most spectacular historic motor racing event and an immersive celebration of vintage cars and fashion.

The Jackie Stewart Pavilion and Race Control Building offer incredible track-side viewing from outdoor terraces, with separate dining areas and briefing rooms.













# THE SUPER SHELL

---

Located at the heart of the Motor Circuit, The Super Shell is an incredible and highly adaptable space, perfect for hosting conferences, product launches, car launches and private parties. It's authentic motorsport heritage, which informs the interior, coupled with its proximity to the track, provides a huge sense of character.

It is an unfurnished space, offering a blank canvas for a truly incredible event at the heart of motorsport history.















# JACKIE STEWART PAVILION

---

In homage to the racing legend and located in the old pit lane garages on the Goodwood Motor Circuit, this two-storey building is sleek and modern with plenty of space, making it ideal for a wide variety of events. Perfect to use during a track day when your guests will experience the same nerve-tingling sweeps and curves that previous motor racing legends have driven, in the very latest sports cars.

With state-of-the-art technology for meetings or presentations, guests can enjoy private dining on the first floor and a large balcony above for superb trackside viewing.















# RACE CONTROL

---

Goodwood's Race Control is an historic building, originally used as part of the airfield, before being adapted for the opening of the Motor Circuit in 1948. It has now been transformed into a contemporary space to host driver briefings, VIP events and as a central point for all MotorCircuit experiences.





















# OLD CONTROL TOWER

---

The Old Control Tower is now a beautiful space where you can enjoy the sounds of roaring engines racing past you on the track as you sip a delicious coffee or tuck into a hearty lunch.

Paying homage to the 40s, 50s and 60s, this historic space is an ideal venue for an event. The upstairs balcony offers incredible views of the track and airfield and provides a breakout space where guests can watch cars race by.















# GOODWOOD AERODROME

---

Formerly known as RAF Westhampnett, the airfield has been here since WWII, serving as a satellite to RAF Tangmere. Located in West Sussex, it is the south coast's focal point for flying excellence. Pilots and passengers enjoy bird's-eye views over the Solent and Isle of Wight.

The Teaching Room at Goodwood Aerodrome is perfect for smaller groups and creative sessions. Filled with natural daylight, this room overlooks the runway and accommodates up to 14 people in a boardroom set-up.

The cafe and roof are available for private events and provide highly adaptable spaces for up to 200 people.



















# THE GOODWOOD HANGARS

---

The ultimate blank canvas, to host an event at the Goodwood Hangars is to claim a space where legacy meets limitless possibility. Here, your vision takes centre stage, supported by the expertise and passion of the Goodwood team.















# CLAY SHOOT LODGE

---

The Clay Shoot Lodge is tucked away in a secret corner of the estate and provides a beautifully intimate space for private dinner parties. You feel as if you are in the highlands of Scotland, with the fire blazing and a dram of whisky in hand.

The evening begins in a fleet of 1950s Land Rovers, the convoy winding its way through the Estate's ancient woodlands and rolling parklands, headlights casting golden beams through the trees – the journey itself is an experience.

Arrive to firepits crackling and the scent of woodsmoke, with glowing lanterns and festoon lighting creating an intimate and magical atmosphere. Butlers serve canapés and drinks flow until guests are welcomed in the Lodge, a space that blends country charm with Goodwood sophistication. Long candlelit tables are set for dinner, with platters of seasonal dishes designed for sharing.

After dinner, enjoy stargazing with telescopes and expert guides as you tuck yourself up in a cosy blanket with a hot drink. This experience is one of effortless luxury and a deep connection to the estate's landscape and heritage.







# GOODWOOD ART FOUNDATION

---

Goodwood Art Foundation is a must-visit for culture lovers and anyone seeking a moment of creative mindfulness.

A unique destination for contemporary art in the UK, Goodwood Art Foundation features the work of internationally acclaimed artists set amid a natural landscape, offering an inspiring and enriching experience for all.

The art is displayed within the environment and in galleries, featuring a headline exhibition by a leading contemporary artist, accompanied by a diverse collection of works from other artists.

Set in spectacular woodland, the environment has been carefully designed by renowned landscape architect, Dan Pearson. It offers 24 seasonal moments for visitors to enjoy, part of a subtly shifting environment that throws new light on the collection as the year passes.







# THE GREAT OUTDOORS

---

From ancient woodland to the rolling South Downs, chalk pits to farmland, there are endless opportunities to get outdoors and feel inspired by nature.

Get off the beaten track in our off road vintage Land Rovers, discover secret parts of the estate unavailable to the public, cook round an open fire and breath in the breathtaking natural beauty of our 11,000 acres.

















# ESTATE EXPERIENCES

---

Only at Goodwood can you take your team out of the office and hurtle around the Motor Circuit by car or simulator, take to the skies in Spitfires, plunge into ice baths using the Wim Hof method, take aim and fire at our clay shoot and off-road in our vintage Land Rovers.

Heart pumping, adrenaline coursing through you, the thrill of speed and adventure making you feel alive; there is no better way to bring your team together. An adrenaline surge is scientifically proven to boost productivity and get your brain engaged.

Drawing on our sporting passions and with a love for all the best things in life - from fine art to fine dining – we are able to offer unique, only at Goodwood opportunities. Learn to fly, drive a supercar on the historic Motor Circuit, experience a day at the races, immerse yourself in history with a visit to Goodwood House and open your mind to creativity at the Goodwood Art Foundation.







# GOODWOOD MOTOR CIRCUIT

---

Goodwood Motor Circuit is the only classic circuit in the world to remain entirely in its original form and has been meticulously restored; from the track itself to the many authentic wartime buildings that still stand on the site.

Yet, the charm of Goodwood goes beyond its history, it's found in the sheer joy of driving. Whether you're behind the wheel of a Lotus Cortina, navigating the bends in a high-performance Ferrari, or embracing the rugged spirit of a Land Rover, the choice is yours. Our carefully curated fleet compliments the iconic and extraordinary design of the Motor Circuit and tests every driver's skill and passion.

Each car gives you the opportunity to immerse yourself in a timeless driving experience, set against a backdrop steeped in heritage, where every corner still echoes with the roar of engines, past and present.







THE ULTIMATE PRIVATE TRACK DAY





REVIVAL RACING EXPERIENCE





OFF-ROADING



RACE SIMULATOR EXPERIENCE







SPIN AND SLIDE EXPERIENCE

# FLYING

---

With beautiful views of the coastline and rolling hills of West Sussex and Hampshire, there can be few experiences more memorable than a flight in the skies above Goodwood.

Formerly known as RAF Westhampnett, the airfield has been here since WWII and is the south coast's focal point for flying excellence.

From Cessnas, Spitfires and Piper Super Cubs you can sit back and enjoy the views or test your nerve with our Top Gun and Ultimate Aerobatic experiences, or let the professionals take the wheel and fly with a fighter pilot.

We also have a fleet of helicopters and you can choose from a number of flights, taking in the beauty of Sussex.







CESSNA FLYING EXPERIENCE



SPITFIRES





HELI HOVER CHALLENGE

# GOLF

---

Goodwood offers two breathtaking 18-hole courses and a short game course, set in stunning surroundings, providing golf as it should be: simple, flexible and accessible.

The Downs is the more challenging and was designed in 1914 by the renowned James Braid. It tees off in front of The Kennels before rising up into the South Downs, providing views across Chichester Harbour to the Isle of Wight. To play The Downs course you must have a valid handicap. The Park course is an easier walking course that suits all levels of ability and, conveniently, tees off from just outside the Hotel. Clubs and shoes can be hired and we also offer short and long-game grass practice areas and putting greens.







CORPORATE GOLF



SHOOTING





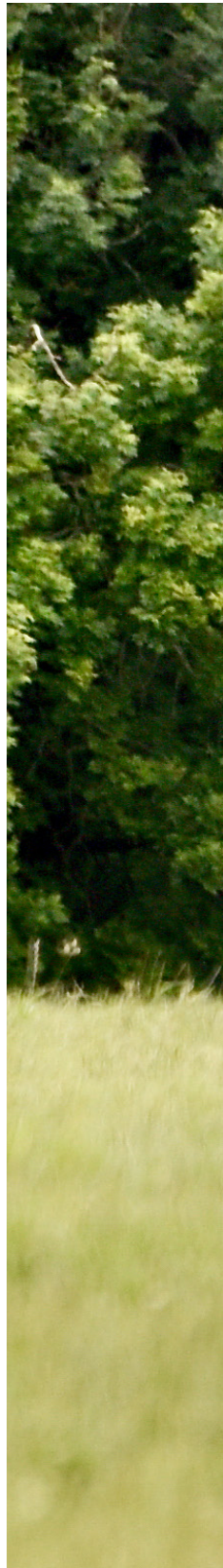


TRENCHES AND TRAPS





TREE CLIMBING







FARM EXPERIENCES





HEALTH & WELLBEING









HEALTH & WELLBEING











# FOOD

---

We know that food, drink and exceptional service make an event. With produce sourced from Goodwood Home Farm, the largest lowland organic farm in Europe, and from the local area, the food you eat should taste delicious and fuel your mind and body.

With fully-serviced kitchens across the estate, we are able to cater for any number of different styles and tastes, using the very best seasonal ingredients.







## GOODWOOD HOME FARM

One of the only self-sustaining organic farms in Europe, Goodwood Home Farm provides exceptional farm-to-fork produce for the entire Estate.

Goodwood has been farmed for over 300 years and sustainable, regenerative farming practices have been passed on generation after generation.

All Goodwood produce can be traced every step of the way, from field to fork. There is an absolute commitment to the care of the livestock and the sustainability of the countryside. No pesticides or fertilisers are used on the estate, ensuring that the wildlife, hedgerows and centuries old natural ecosystem is protected and the produce is as wholesome as the land from which it comes.

The farm's produce features on menus in restaurants across the estate and at Goodwood's flagship events. In particular, Farmer, Butcher, Chef, the estate's flagship restaurant, is a celebration of the beef, pork and lamb reared on the estate. The farm also provides produce to the Farm Shop, including meat, milk, cheeses, beer and gin. With an in-house butchery and dairy, there is an assurance that customers will have travelled further than the food.

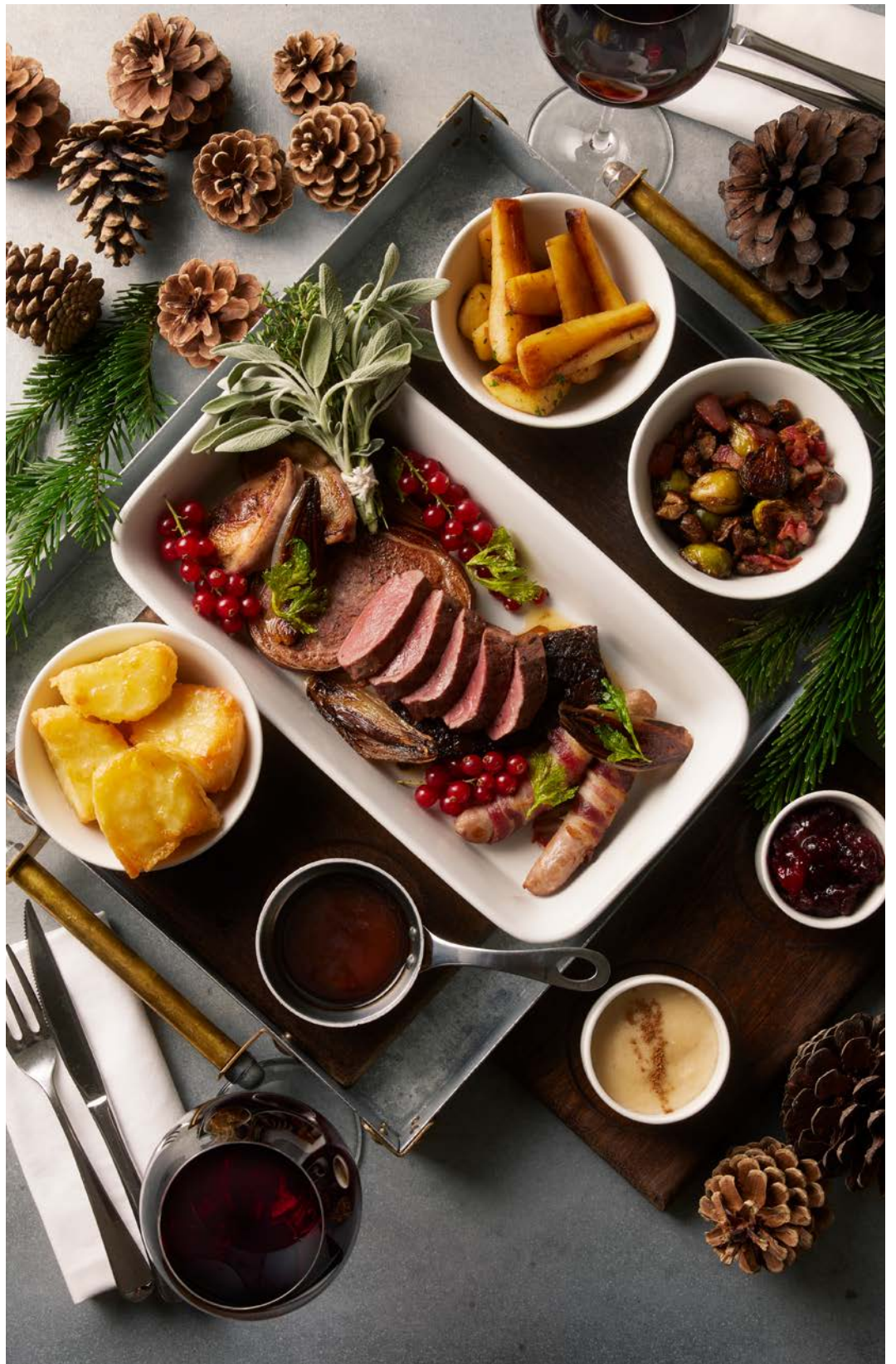












# STAY THE NIGHT

---

## HOUND LODGE

Tucked away in ancient woodland, Hound Lodge is a beautiful escape from the world and the perfect place to experience all the estate has to offer. With a private chef and butler on hand to ensure that every need is taken care of, your time here is entirely your own.































# STAY THE NIGHT

---

## GOODWOOD COTTAGES

Your home-from-home at the heart of the Goodwood Estate, where you will discover luxury amidst picturesque landscapes, our unique holiday cottages offer comfort and elegance.

We believe that it's the little things that make a stay exceptional, from carefully selected produce from the farm on your arrival, a BBQ in the garden for you to enjoy in the summer months and beautifully designed walking maps that help unlock the estate.































# STAY THE NIGHT

---

## THE GOODWOOD HOTEL

With stunning surroundings on the edge of the South Downs National Park in West Sussex, The Goodwood Hotel is the very essence of British style, offering a perfect balance of award-winning food and 91 comfortable rooms.

































# SUSTAINABILITY

---

Since the first Duke of Richmond came to Goodwood in 1697, the estate has successfully adapted to ever changing socio-economic and natural environmental conditions.

Today, Goodwood addresses current challenges through innovative methods, drawing inspiration from its sporting heritage and the picturesque South Downs landscape, ensuring that future generations can cherish Goodwood as we all do today.

From solar panels and biomass boilers to nature recovery and biodiversity projects, there are a number of initiatives underway, including the introduction of 150,000 new trees since 2018. The estate is constantly evolving and continues to meet the challenges of climate change with creativity and innovation.

The Sustainability Report highlights our sustainable accomplishments over the past year and addresses the challenges we've faced in striving to become as sustainable as we possibly can.

Please click [here](#) for more information.







**GOOD**

Goodwood, West

01243 520195 | even





**WOOD**

Sussex PO18 0PX

ts@goodwood.com



	THEATRE	BOARDROOM	U-SHAPE	CL
YELLOW DRAWING ROOM 6.3 x 15.5 x 5.5M	150	40	30	
BALLROOM 7 x 24.3 x 6.8M	245	72	100	
CARD ROOM 6 x 4.9M	–	12	–	
ROUND RECEPTION ROOM 6 x 4.9M	–	12	–	
SUPPER ROOM 5.3 x 15.5 x 5.5M	80	50	–	
FRONT HALL 10.7 x 11.6 x 5.5M	–	–	–	
EGYPTIAN DINING ROOM 7.2 x 14.6 x 5.5M	80	28	12	
MUSIC ROOM 5.3 x 10.5 x 5.5M	–	–	–	



## MEETING ROOM CAPACITIES

\_\_\_\_\_

CLASSROOM	CABARET	BUFFET	DINNER	RECEPTION
50	70	70	80	150
100	120	150	180	225
—	—	—	—	15
—	—	—	20	12
—	—	—	—	250
—	—	—	—	350
50	50	60	64	64
—	—	—	40	48

MEETING ROOM AS WIDTH X LENGTH X HEIGHT

RACECOURSE RO

---

ROUNDS

CHARLTON HUNT	130
DOUBLE TRIGGER	120
LONG VIEW	150
HORSE WALK	180
CHARLTON HUNT ROOF	–



DOM CAPACITIES

CABARET	THEATRE	FOOD AND DRINK RECEPTION
–	–	–
72	80	180
90	60	150
108	180	190
–	–	350

THE KENNELS RO

	THEATRE	BOARDROOM	U-SHAPE
MUSIC ROOM 7.7 x 3.8 x 3.01M	30	18	16
LIBRARY 7 x 24.3 x 6.8M	20	6	–
TERRACE DINING ROOM 3.96 x 9.15M	35	26	22
RESTAURANT 2.98 x 9.95M	–	–	–
ALL DINING ROOMS 5.3 x 15.5 x 5.5M	–	–	–

ROOM DIMENSIONS ARE SHOWN



## ROOM CAPACITIES

CLASSROOM	CABARET	BUFFET	DINNER
9	16	16	24
–	–	40	–
12	20	22	40
–	–	–	38
–	–	–	78

AS WIDTH X LENGTH X HEIGHT

THE GOODWOOD HOTEL

	THEATRE	BOARDROOM	U-SHAPE
OAKS 16.7 x 7 x 2.5M	85	30	30
OAKS 1 OR 2 16.7 x 7 x 2.5M	30	16	15
THE LENNOX 5.7 x 7.6 x 3.1M	36	20	–
RED ROOM 4.4 x 5.1 x 3M	12	10	–

ROOM DIMENSIONS ARE SHOWN



TEL ROOM CAPACITIES

CLASSROOM	CABARET	BUFFET	DINNER
30	40	70	–
14	15	30	–
–	24	–	36
–	5	–	10

AS WIDTH X LENGTH X HEIGHT

GOODWOOD MOTOR CIR

	THEATRE	BOARDROOM	U-SHAPE
JACKIE STEWART PAVILION 16.7 x 7 x 2.5M	40	22	19
RACE CONTROL BUILDING 16.7 x 7 x 2.5M	30	30	9
SUPER SHELL 5.7 x 7.6 x 3.1M	80	16 TABLES 48 CHAIRS	16 TABLES 42 CHAIRS
OLD CONTROL TOWER	20	22	17



RCUIT ROOM CAPACITIES

CLASSROOM	CABARET	POSEUR TABLES	ROUNDS
18	18	6 TABLES 40 CHAIRS	4 TABLES 40 CHAIRS
—	—	—	—
12 TABLES 24 CHAIRS	12 TABLES 60 CHAIRS	40 TALL TABLES 60 STOOLS	14 TABLES 140 CHAIRS
20	—	—	—

# GOODWOOD

Goodwood, West Sussex PO18 0PX

01243 520195 | [events@goodwood.com](mailto:events@goodwood.com)

