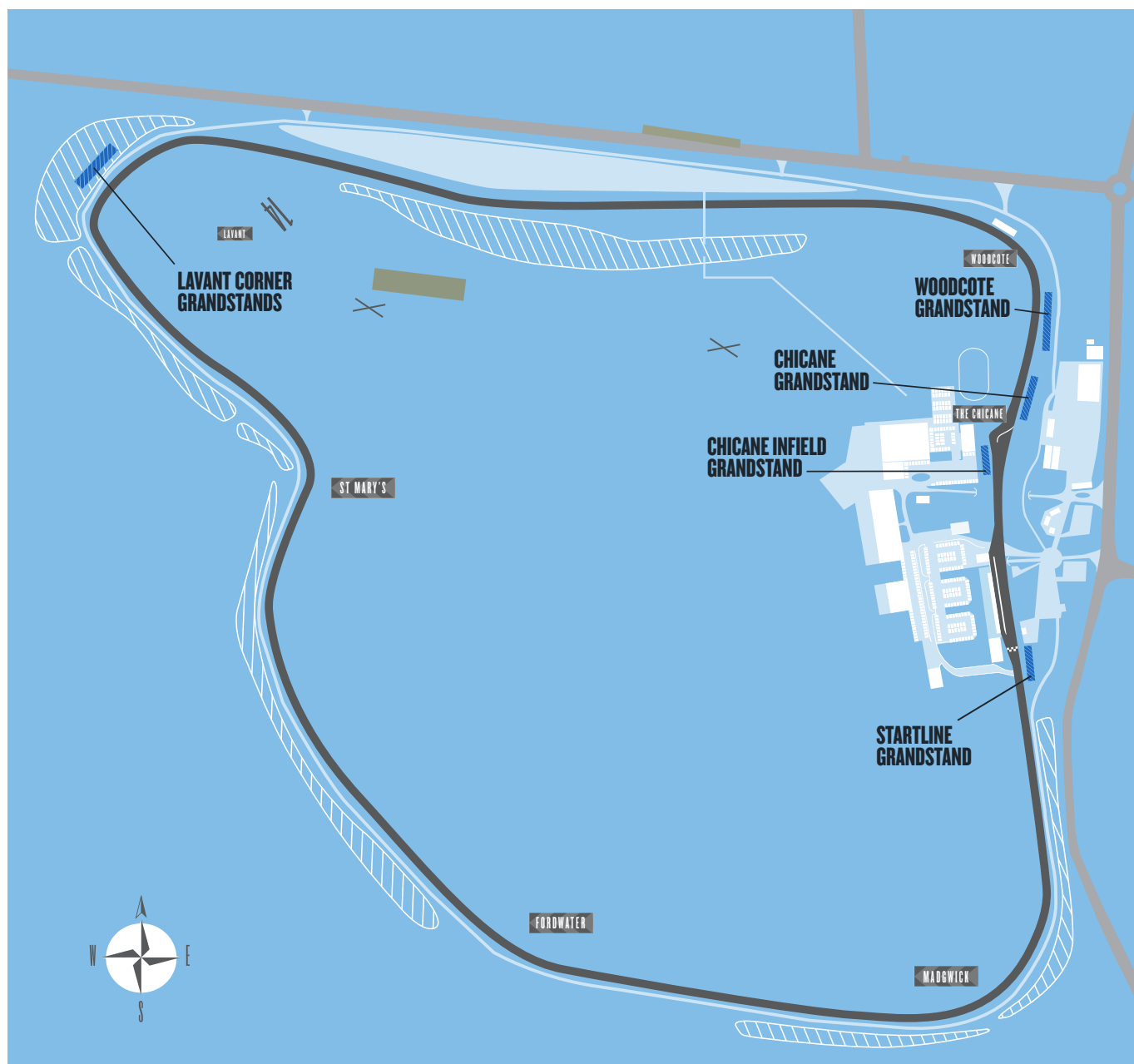


75

MEMBERS' MEETING GRANDSTANDS



To enjoy the best views of the first major historic motor racing event on the season, it's well worth securing a grandstand seat at Members' Meeting. Whether you love the sight of cars trail-braking and drifting sideways through the corners or opening the throttle wide and blasting down the straights, a grandstand seat will guarantee an outstanding view of the action.

Both roving and seated grandstands sell out quickly, so be sure to book early to secure your place.

WHICH GRANDSTAND?

Every grandstand option provides a superb view of the racing and high-speed demonstrations that take place throughout the weekend, but each offers something unique at different parts of the Motor Circuit.

STARTLINE:

The Startline Grandstand overlooks the start/finish straight and pitlane, where cars and bikes line up on the grid before tearing off towards Madgwick with tyres screeching and smoking. It's the ideal place to see which drivers and riders make the best start and also the perfect viewpoint to see how the positions are changing throughout the race. And with a Startline seat you'll also see the chequered flag drop as the competitors push for all their worth to secure the best possible placing. As an added bonus, watch the post-race celebrations take place on the grid, as victorious riders and drivers are festooned with garlands and medals.

LAVANT CORNER:

The most dramatic bend on the circuit, Lavant's right-handed double apex is the ultimate test of skill. Drivers battle to keep cars from squirming sideways and riders lean hard into the asphalt to keep bikes from straying off the racing line. A rise into Lavant means setting up early is the key, then it's all about carrying speed and maintaining a line before getting back on the power quickly to get a run into the Lavant Straight. If screeching tyres, fearless racing and sideways action is your thing, you'll want a seat in the Lavant Corner Grandstand.

WOODCOTE:

Having hammered down the Lavant Straight, competitors attempt to brake as late as possible to gain an advantage through Woodcote. Riders and drivers have to use every bit of their skill and be fearless as they approach from very high speeds before feeding their machines into this unforgiving double-apex corner. Position through Woodcote is vital as the corner is quickly followed by the Chicane, where the track narrows significantly. Booking a seat in the Woodcote Grandstand guarantees excitement, but one question remains – who will be the last of the late brakings?

CHICANE:

This grandstand offers the best view over the Chicane, where drivers grapple with their machines as they duck and squirm through these rapid changes of direction. Coming hard out of Woodcote before scrubbing speed on the approach to the Chicane, cars kick their back ends out on opposite lock before diving through the narrowest part of the circuit. It is not uncommon to see drivers attacking the Chicane side by side, leaving no room for error as they squeeze through before firing up the finishing straight. A true spectacle.

CHICANE INFELD:

Built for the first time at the 74th Members' Meeting, Chicane Infield is the only grandstand on the Motor Circuit's infield. Affording guests a panoramic view as drivers and their priceless cars stream through Woodcote, brake hard for the Chicane, and accelerate away down the start/finish straight, its popularity among GRRM Members has earned it a return for the 75th edition. The Chicane is one of the most technically demanding features of the Goodwood track, which always provides plenty of incident and drama, and Chicane Infield gives a whole new perspective on the action.